



# LEVINAR

## EXPANDED LEARNING OPPORTUNITIES

September 22, 2016



# SCHOOL'S OUT WASHINGTON

SOWA is a statewide organization that supports high-quality expanded learning opportunities afterschool and in the summer through:

- Engaging, convening, and supporting critical constituencies
- Promoting quality standards and accountability
- Brokering and leveraging resources
- Promoting effective policies

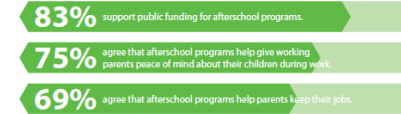
- Young people’s education doesn’t stop when the school day (or year) ends
- Only 20% of a child’s waking hours is spent in school
- What we do with the rest of that time matters

## Afterschool Expanded Learning Opportunities



Washington State faces a widening Achievement Gap. Students of color and low-income students are less likely to meet grade level standards and graduate at lower rates than their white and middle to higher income peers. Expanded Learning Opportunities (ELOs) are high-quality afterschool and youth development programs that provide innovative, hands-on learning and strive to be a part of the solution to the opportunity gap.

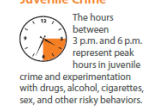
### Washington Parents Support Afterschool Programs<sup>1</sup>



### Why Afterschool?

No single learning setting will prepare students for success; rather, an integrated approach to learning across the day, across the year, and across a student’s lifetime is required for 21st century academic and career success.

### Decreases Juvenile Crime<sup>6</sup>

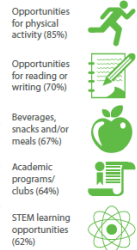


### Recommendations

- 1 Increase federal, state, and local support for expanded learning programs.
- 2 Utilize the Washington State Quality Standards for Afterschool & Youth Development Programs to provide guidelines for what quality should look like in a program setting.
- 3 Continue to build partnerships between districts, schools, and expanded learning programs housed both in schools and in community-based organizations.

For more information please contact David Beard at [DBear@schoolsoutwashington.org](mailto:DBear@schoolsoutwashington.org).

### What’s available at afterschool programs?<sup>1</sup>



### Academic Impact

- Improved test scores<sup>2</sup>
- Improved school grades<sup>3</sup>
- Improved school attendance<sup>4</sup>
- Increased engagement in learning<sup>5</sup>
- Lower dropout rates<sup>5</sup>

<sup>1</sup> AfterSchool Alliance, Afterschool Programs in Demand (2014), America After 3pm.

<sup>2</sup> Goldsmiths, Huang, & Chien, 2007; Huang, Goldsboro, Kim, Lee, & Baker, 2000; Huang, Levin, Harves, Li, Toris, & Mostafaei, 2009; Huang, Levin, & Baker, 2011; Huang, Levin, Li, Toris, & Mostafaei, 2008.

<sup>3</sup> Huang et al., 2011.

<sup>4</sup> Huang et al., 2007a; Huang et al., 2000.

<sup>5</sup> Huang, Kim, Marshall, & Perez, 2005.

<sup>6</sup> Newman, S.A., et al. America’s After-School Choice: The Prime Time for Juvenile Crime, or Youth Enrichment and Achievement? Fight Crime: Invest in Kids, Washington, D.C., 2002.



# WHY EXPANDED LEARNING OPPORTUNITIES?

- Link to learning
  - ELO programs can bring to life what children and youth are learning in the classroom
- Working with different types of adults and professionals
  - Community-based organizations are the perfect partners
- Fun. Engaging. No, seriously.
  - Linked to learning BUT focus on youth voice and choice



BUT DON'T JUST TAKE OUR WORD FOR IT...

**LISTEN TO KIDS!**



## PROGRAM QUALITY MATTERS

- High-quality expanded learning opportunities produce positive social, emotional, academic gains

## PROGRAM QUALITY IS MEASURABLE

- Research and practice agreement about the features of a quality learning environment

## PROGRAM QUALITY IS MALLEABLE

- When programs focus on strengthening instructional practices aligned with quality, they can influence outcomes



# OUT OF SCHOOL (OST) QUALITY INITIATIVE PILOT

## Partners

- Department of Early Learning (DEL)
- Office of Superintendent of Public Instruction (OSPI)
- School's Out Washington (SOWA)
- Child Care Aware (CCA)
- Raikes Foundation
- University of Washington (UW)

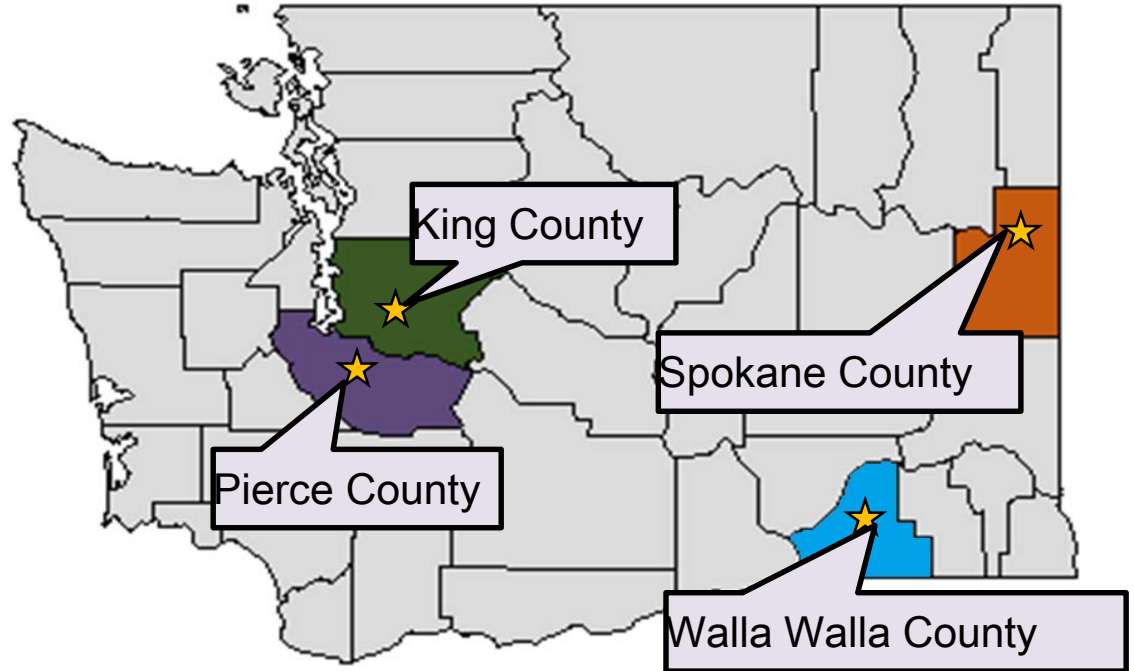
## **Number of Sites - 50**

### **4 Regions**

- Licensed Family Home
- Licensed Childcare Centers (0-12)
- Licensed School-Age Only Centers
- 21<sup>st</sup> Century CLC
- Non-licensed OST Programs

## Tools

- SAPQA and YPQA
- Quality Seal Measure (to be developed by UW)





## WAYS TO PLUG IN

- Expanded Learning Opportunities Council
- Washington Afterschool Network (WAN)
- Expanded Learning Opportunities Coalition



# ELO COALITION – STATE LEGISLATIVE STRATEGY WORK GROUP





# ELO COUNCIL WANTS TO HEAR FROM YOU

## WASHINGTON STATE EXPANDED LEARNING OPPORTUNITIES COUNCIL – PUBLIC FORUM ON EXPANDED LEARNING

***THURSDAY, OCTOBER 6<sup>TH</sup>, 6PM – 8:00PM*** (DINNER PROVIDED)

HIGHLINE COMMUNITY COLLEGE  
HIGHLINE STUDENT UNION – MT. CONSTANCE CONFERENCE ROOM  
2400 S 240TH STREET  
DES MOINES, WA 98198



QUESTIONS?



WANT TO LEARN MORE?



**DARE TO DISRUPT!** THE PATHWAY TO EQUITY  
AND EXCELLENCE IN EDUCATION  
**NATIONAL CONFERENCE ON AFTERSCHOOL AND SUMMER LEARNING**

OCTOBER 24-26, 2016  
SEATTLE, WASHINGTON

[summerlearning.org/conference](http://summerlearning.org/conference)



national summer  
learning association



 THANK YOU!



DAVID BEARD

*POLICY AND ADVOCACY DIRECTOR*  
DBEARD@SCHOOLSOUTWASHINGTON.ORG

STEPHANIE LENNON

*POLICY AND ADVOCACY COORDINATOR*  
SLENNON@SCHOOLSOUTWASHINGTON.ORG