

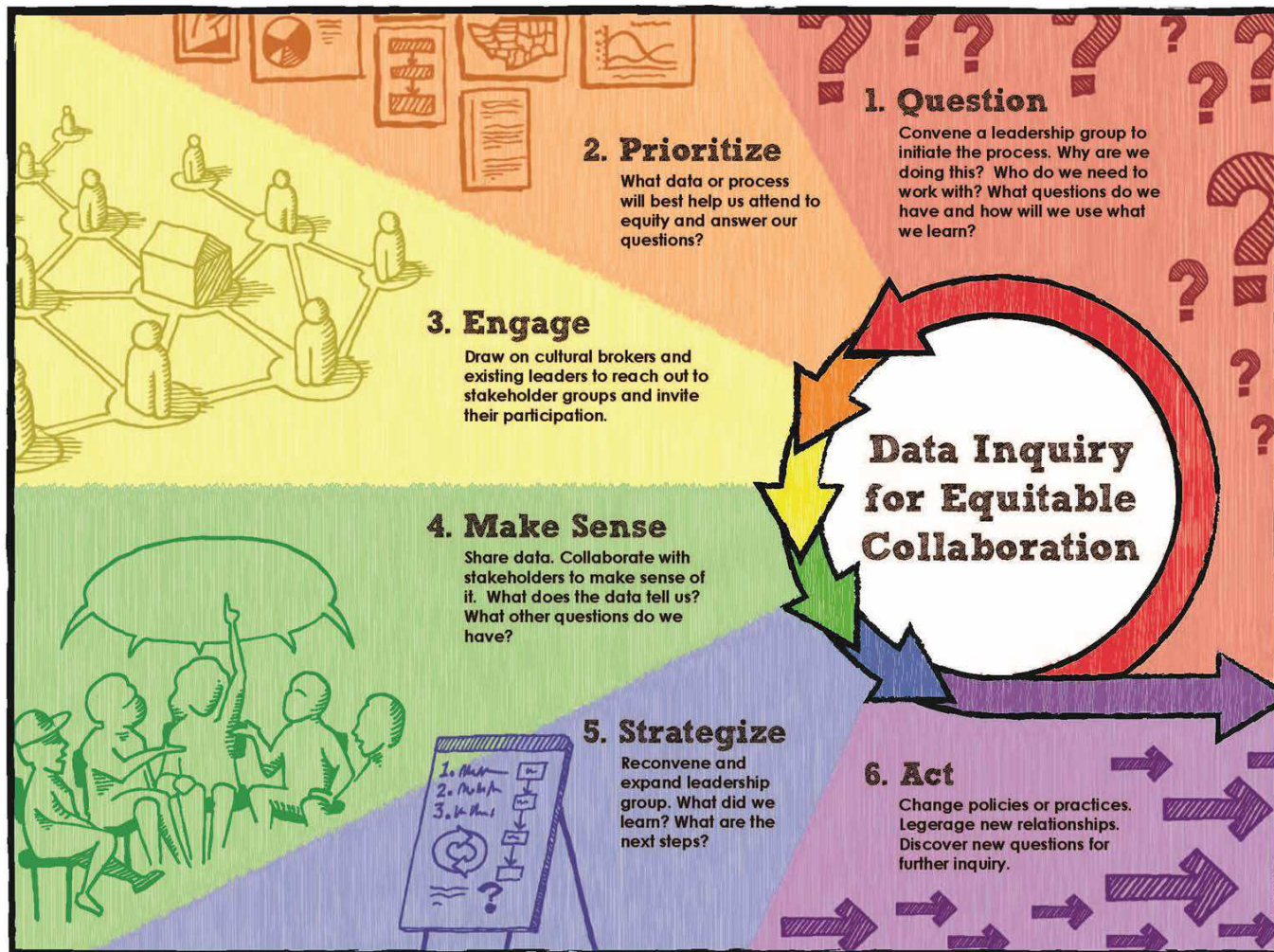
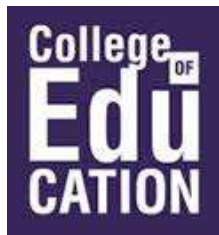


# Family Engagement Survey

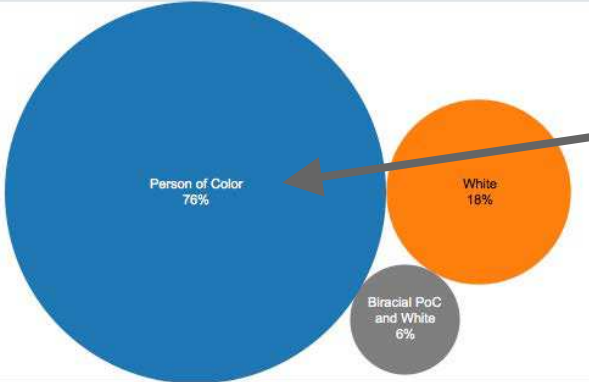
Presentation for:



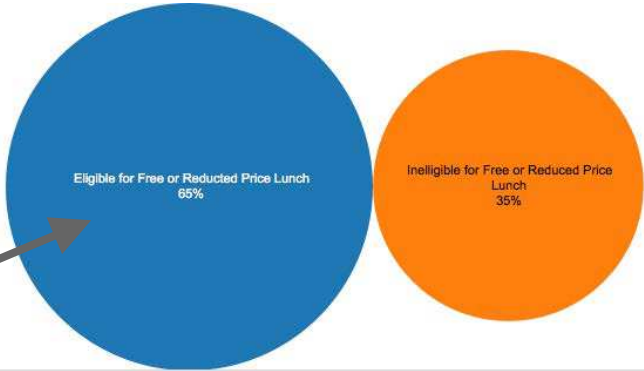
# Why are we here?



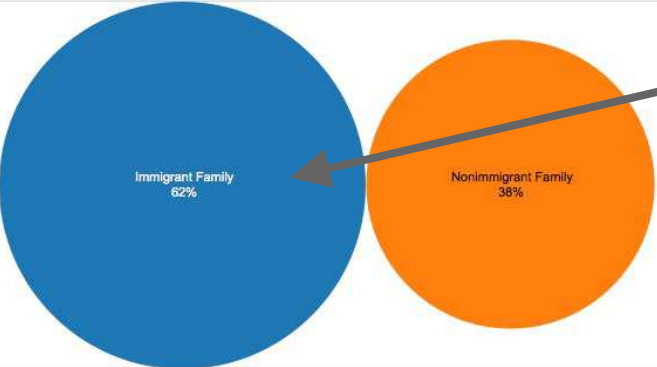
# Big Finding # 1: by Majority vs Dominant



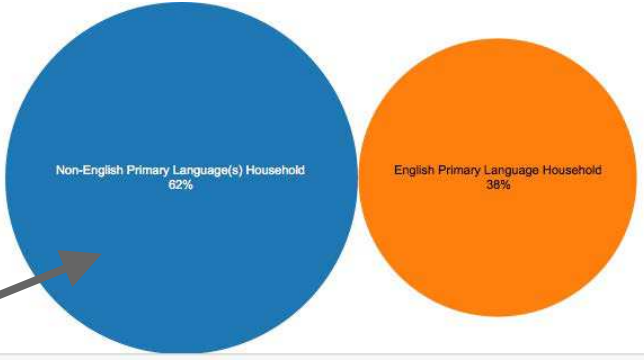
**by Race**  
(76% PoC)



**by Class**  
(65% F/R Lunch)



**by Immigration**  
(62% Immigrant)



**by Home Language**  
(62% Non-English)

# Big Finding # 1:

- 10 Languages online and in paper:
  - Amharic, Chinese, English, Oromo, Russian, Somali, Spanish, Tagalog, Tigrinya, Vietnamese
- ☒ 639 families
  - 51.6% took the survey in a language other than English
  - 77.3% preferred paper
- ☒ Changing the conversation about who is in research and who does research.

\* White \* Full-price Lunch \*  
\* Non-Immigrant \* Primary  
English Speaker \*

## Dominant

Being in a position of systemic power and privilege. More specifically, exerting control over educational practices, policies, and research to reinforce hierarchies between social groups.

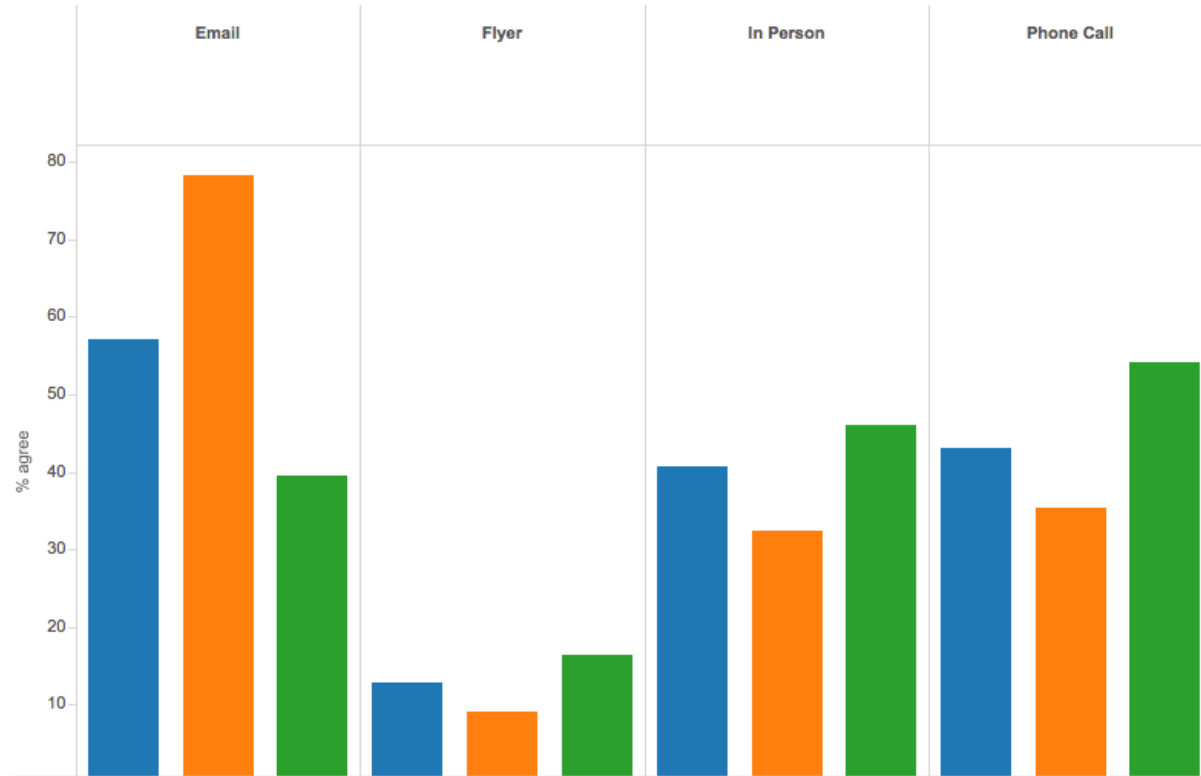
\* Person of Color \* Free  
Lunch \* Immigrant \* Primary  
Non-English Speaker \*

## Majority

Being in a position of democratic potential and possibility. More specifically, transforming educational practices, policies, and research to support historically oppressed and overlooked social groups.

# Big Finding #3: Areas of Need

- thinking about technology and language bias
- ☒ and valuing person to person contact as well as more clarity



■ = Everyone   ■ = Dominant   ■ = Majority