

EDUCATION FUNDING PRIORITIES SURVEY SUMMARY

METHODS

To help direct our work with our community to create positive change in Washington's education system, we sent out a survey via email and social media channels in May to learn how Washington community members would like state education funding prioritized. We thank the 737 people, from 71 school districts across the state, who submitted responses.

SCHOOL DISTRICTS

■ NO RESPONSE
1 # OF RESPONSES



RESPONDENT PROPORTIONALITY

While we received responses proportionate to the population of middle to high socioeconomic status school districts, there was a disproportionality for lower socioeconomic school districts. Therefore, we also parsed out the survey responses based on school districts' percentage of students on Free and Reduced Priced Lunch (FRPL), a common marker for socioeconomic status, to fully understanding our community's priorities.

THE BEST INVESTMENT:

RESPONDENTS RANKED THE FOLLOWING OPTIONS:

STAFF

- Counselors / nurses / social workers
- Instructional aides
- School staff training (trauma, social emotional learning, effective discipline practices)
- Professional development for teachers
- Increase staff salaries

STRUCTURE

- School start time
- Early childhood education (preschool)
- Smaller teacher to student ratio (smaller class size)
- Longer school day
- Longer school year
- Additional after school and summer school programs

HEALTH

- Mental health services

SPECIALIZED / PERSONALIZED

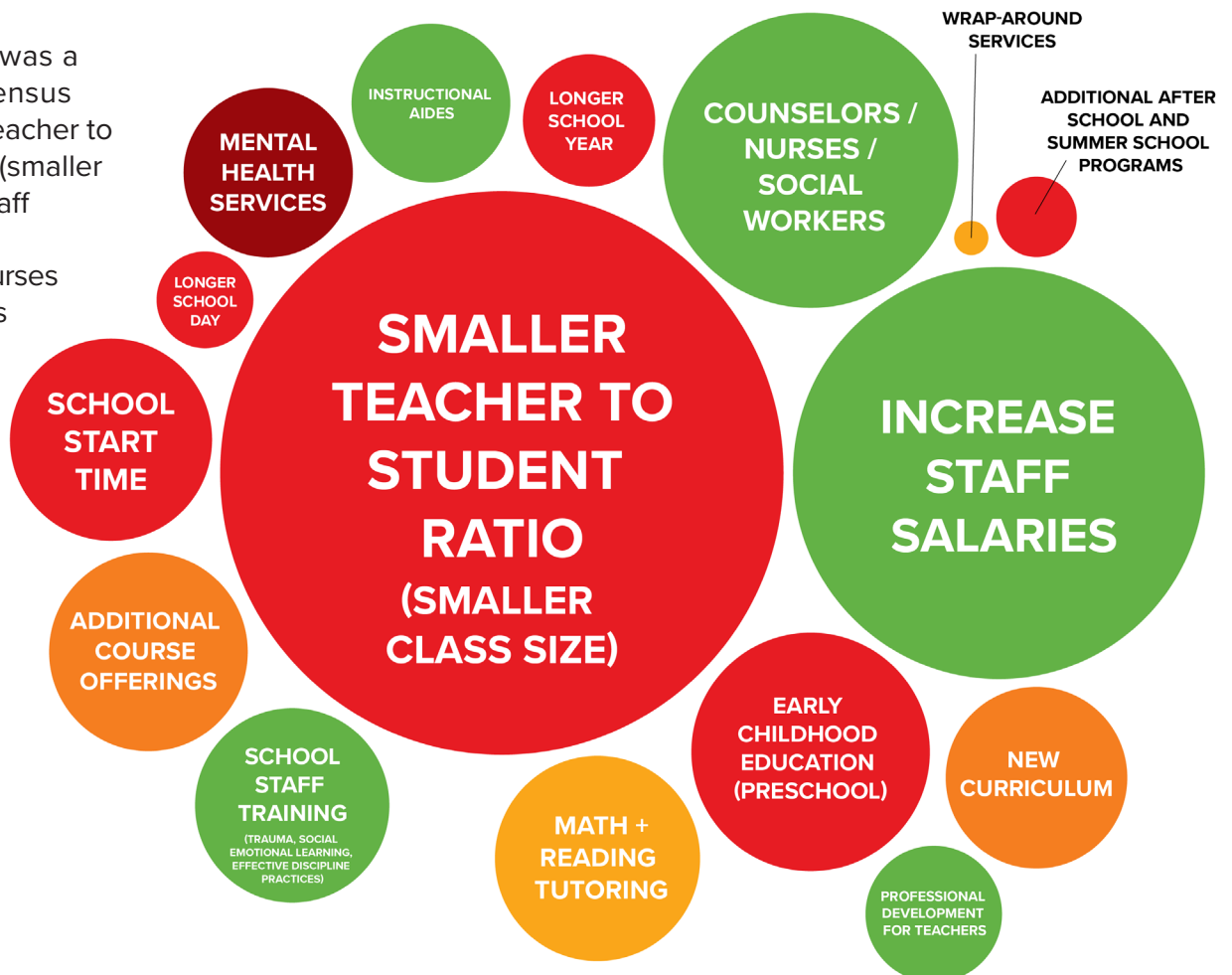
- Wrap-around services
- Math + reading tutoring

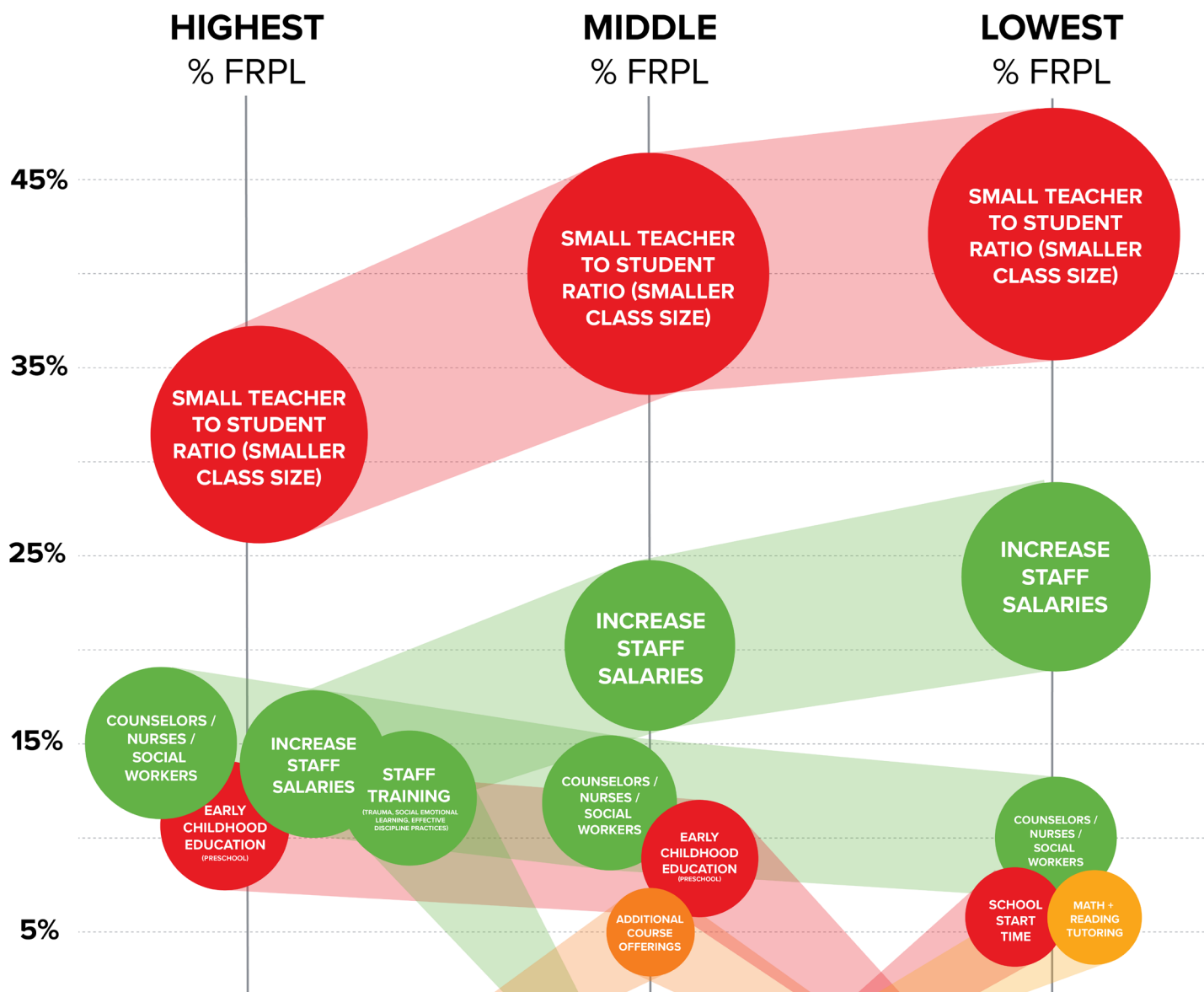
CONTENT

- New curriculum
- Additional course offerings

OVERALL

Overall there was a general consensus that smaller teacher to student ratios (smaller class sizes), staff salaries, and counselors / nurses / social workers are the top priority.





DIFFERENCES

However there was a difference in priorities amongst different socioeconomic brackets. Specifically, survey respondents from school districts with a higher percentage of students qualifying for FRPL placed counselors / nurses / social workers above staff salaries. They also prioritized school staff training in trauma, social emotional learning, and effective

discipline practices fourth, which was much lower priority for mid range and lowest percentage FRPL districts. Early childhood education (preschool) was then prioritized fourth by the highest percent FRPL districts and fifth by the middle percent FRPL districts.

ADDED PRIORITIES:

58% of the respondents also added in further priorities.

AREAS

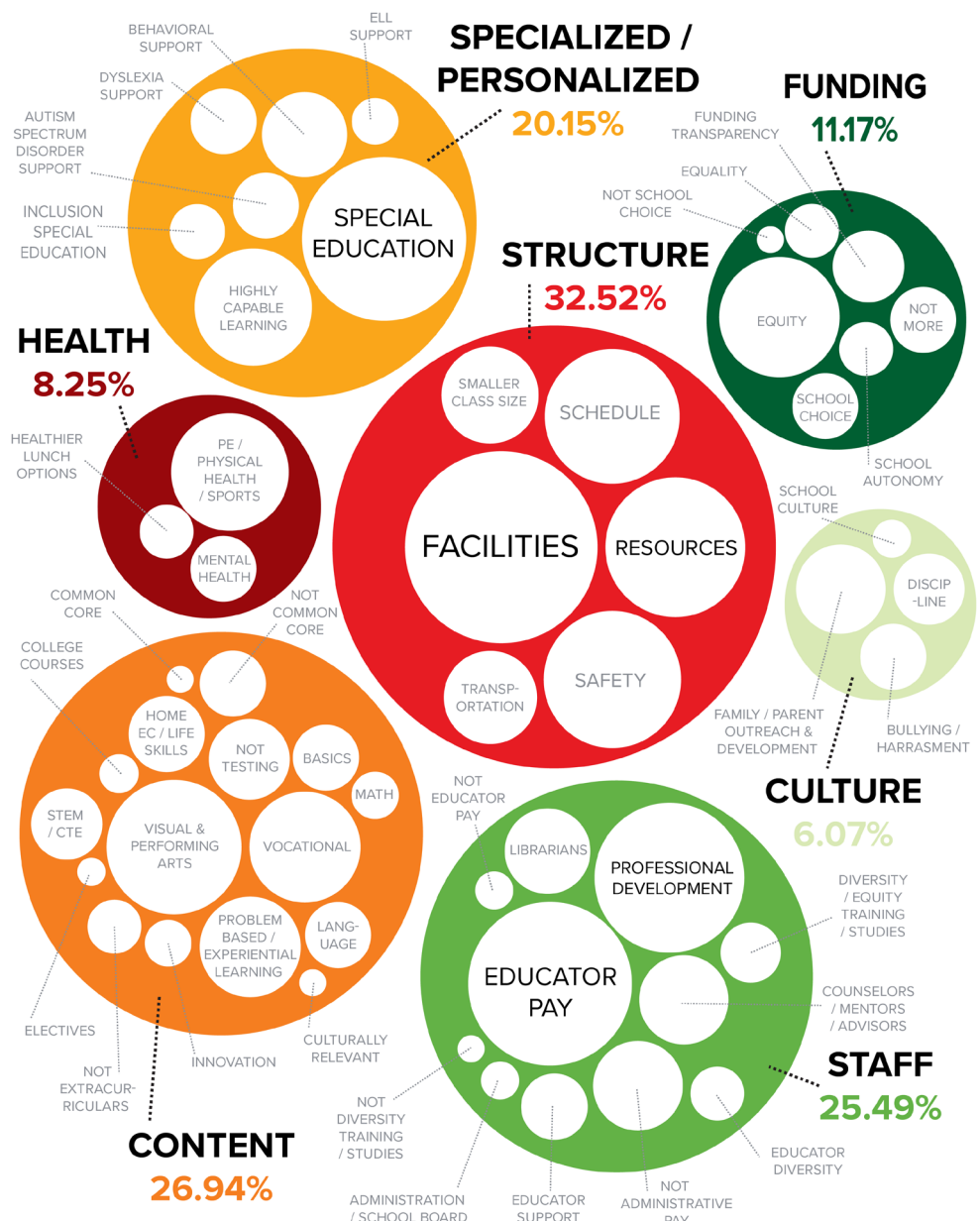
The most commonly mentioned areas included structure (facilities, resources, safety, schedule, etc.), content (art, vocational, etc.), staffing (educator pay, professional development, etc.), and specialized or personalized learning (special education, highly capable learning, etc.). Also mentioned but less common was how the funds are dispersed, health, and culture.

SUBCATEGORIES

Within the seven broad areas, there were 54 subcategories. The most commonly mentioned subcategory was facilities. Special education and educator pay tied in second, then professional development, resources, and safety.

REQUESTS

The most common requests within these most commonly mentioned subcategories were as follows:



FACILITIES

- Maintain current school buildings
- Build new schools to decrease overcrowding and the use of portables



SPECIAL EDUCATION

- More advocates, resources, paraeducators, ombudsman
- Better student access, staff training



EDUCATOR PAY

- General increase
- Incentives for teaching certain subjects or in specific areas
- Maintain cost of living adjustments



PROFESSIONAL DEVELOPMENT

- Better or less teacher evaluations
- Include admin in teacher teams
- Student and mentor teachers



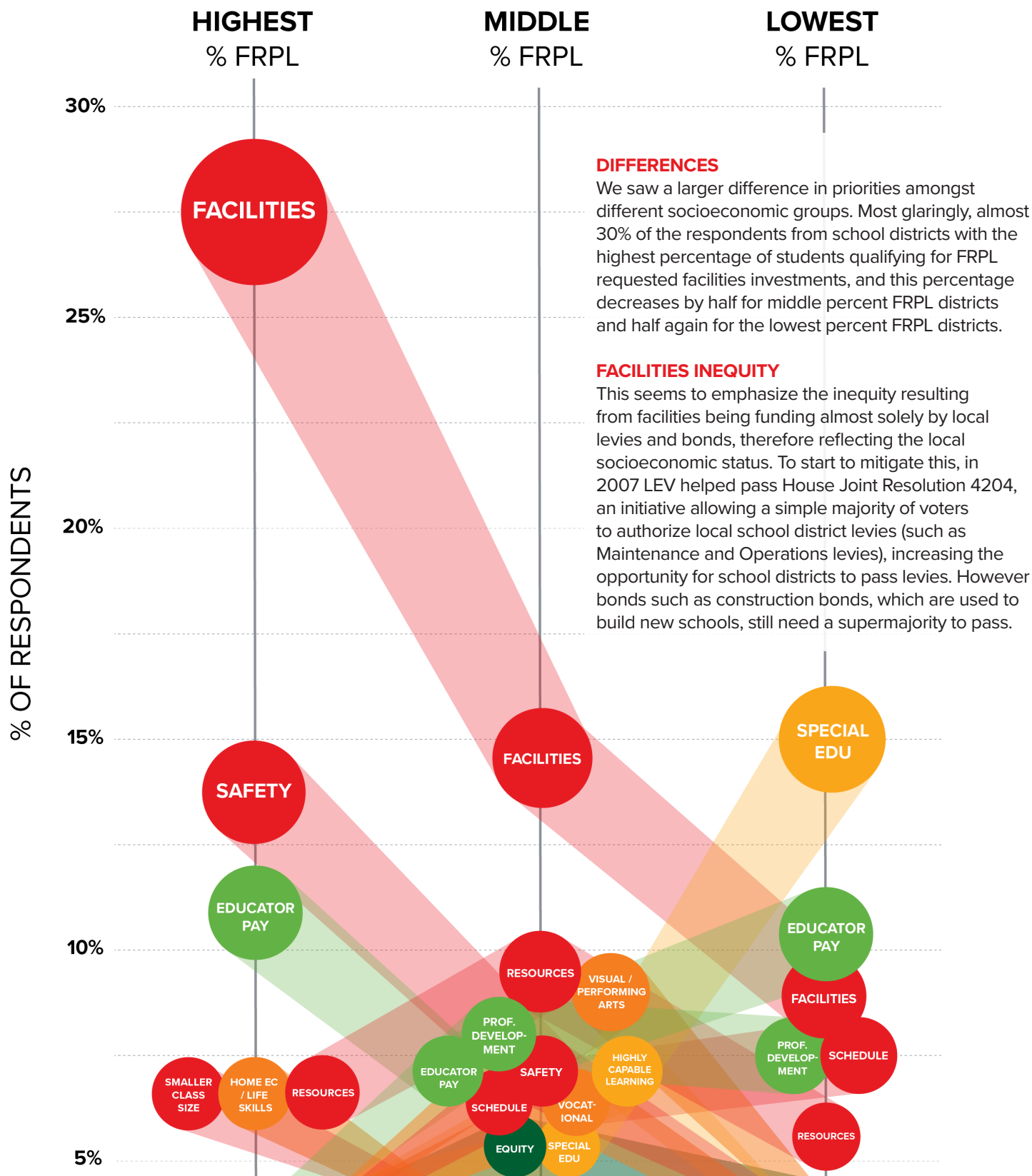
RESOURCES

- Technology updates
- Online degrees
- Better access to textbooks
- General classroom supplies



SAFETY

- Overall building safety
- Safety on buses
- Security measures (cameras, resource officers, metal detectors)



OUR WORK

Among many other equity focused projects, League of Education Voters is already advocating for student supports such as counselors and social emotional training, as well as a simple majority to pass bonds. In addition we will continue to refine our goals with this community input.

THANK YOU

If you did not have a chance to complete the survey and do not see your priorities reflected in this summary, please contact us. We will make sure to include your input in our ever-evolving understanding of Washington state's community education funding priorities.